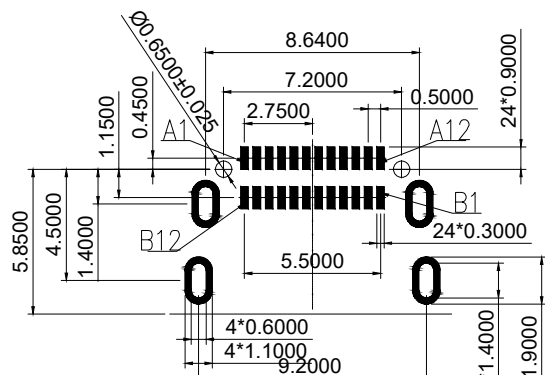
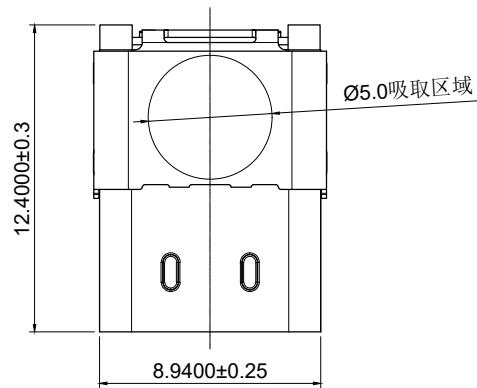


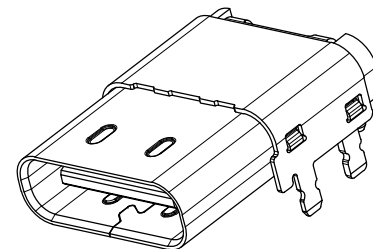


REV	DESCRIPTION	DATE	APPROVED
A	新板发行	2023.05.05	HHM



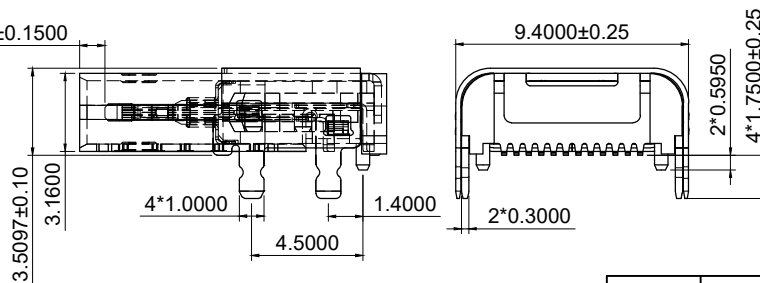
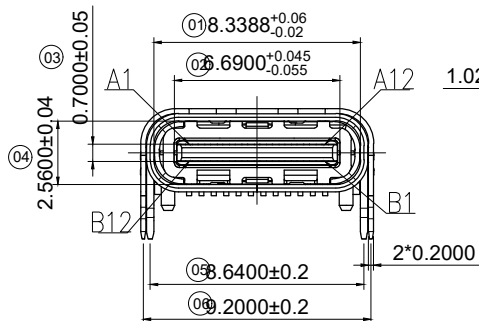
RECOMMENDED PCB LAYOUT (COMPONENT SIDE)

TOLERANCE: ±0.05



REMARKS (备注):

- CONTACT INSERTION AND WITHDRAW FORCE (插拔力):
  - 1.1. Insertion force (插入力): 5N-20N max.
  - 1.2. Withdrawal force (拔出力): 8N-20N.
  - 1.3. Durability (耐久性): 10000 Cycles.
- ELECTRIC PROPERTY (电气性能):
  - 2.1. Contact current rating (额定电流): 5A.
  - 2.2. Dielectric Strength (介电强度): 100V AC (RMS).
  - 2.3. Insulation Resistance (绝缘电阻): 100 megohms (兆欧) min.
  - 2.4. Contact resistance (接触电阻):
    - 40mOhms MAX. FOR VBUS, GND AND OTHER CONTACT.
    - 50mOhms MAX. AFTER ENVIRONMENT TEST.
- AMBIENT TEMPERATURE (温度环境):
  - 3.1. Operating temperature (制造温度): -55° C to +85° C.
- Marked "XX" should be FAI DIM (标 "XX" 的为重点管控)



6	Outer-Shell	SUS-304 T=0.20mm	Ni: 50U"
5	Shell	SUS-304 T=0.30mm	Ni: 50U"
4	Shrapnel	SUS-304 T=0.12mm	
3	Tatch	SUS-301 T=0.15mm	
2	Terminal	C7025 T=0.15mm	Ni: 50U", Au: G/F, Sn: 60U"
1	Housing	LCP	UL94-0 BLACK
ITEM	DESCRIPTION	MATERIAL	REMARKS

USB TYPE-C PIN ASSIGNMENTS

PIN NUMBER	SIGNAL NAME	PIN NUMBER	SIGNAL NAME
A1	GND	B12	GND
A2	SSTXp1	B11	SSRXp1
A3	SSTXn1	B10	SSRXn1
A4	V BUS	B9	V BUS
A5	CC1	B8	SBU2
A6	Dp1	B7	Dn2
A7	Dn1	B6	Dp2
A8	SBU1	B5	CC2
A9	V BUS	B4	V BUS
A10	SSRXn2	B3	SSTXn2
A11	SSRXp2	B2	SSTXp2
A12	GND	B1	GND

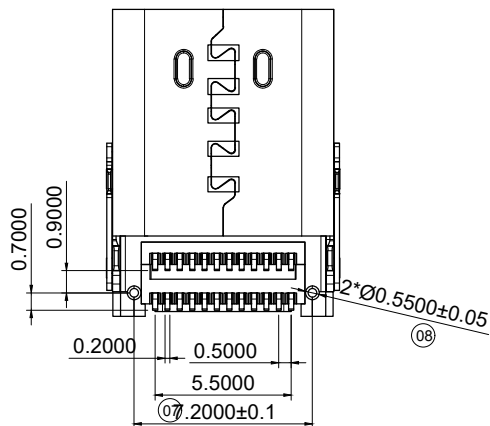
CUSTOMER DRAWING

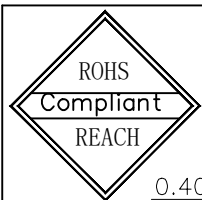
UNITS	SCALE	SHEET
mm	1:1	1 OF 2
PROJECTION:	DRAW:	
	DAP	
GENERAL TOLERANCE	CHECK:	
.000 ±0.02	HWT	
.00 ±0.10	APPD:	
.0 ±0.20	HHM	
.0 ±2°		
.00 ±1°		

铭创科技 (东莞) 有限公司  
Mingchuang Technology (Dongguan) Co., Ltd

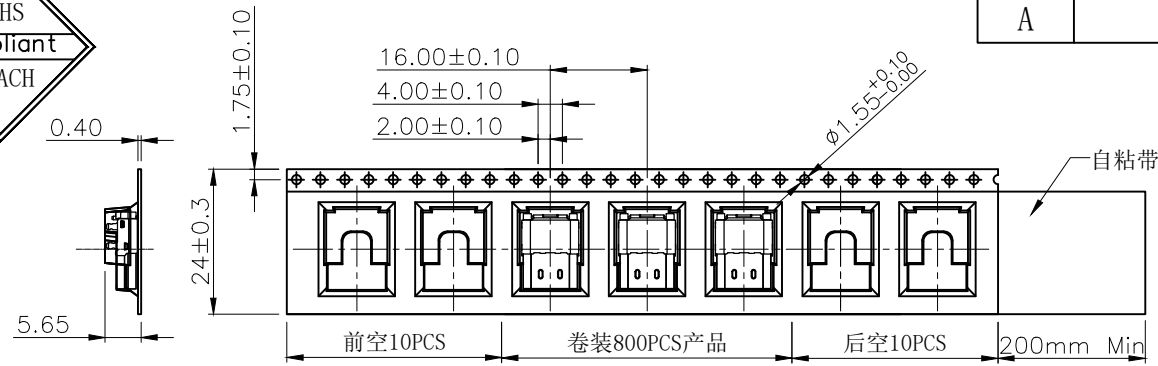
TITLE  
TYPE C母座24PIN 板上四脚插板SMT+SMT  
L=12.4 双外壳 三模 有柱 无弹

MAT'L	FINISH
SEE TABLE	SEE TABLE
DWG. NO.	PART NO.
B102401A	_____
	SIZE
	A4

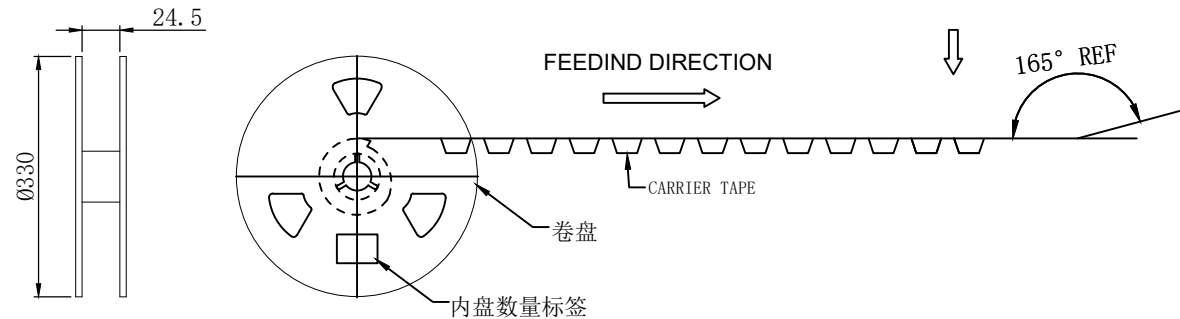




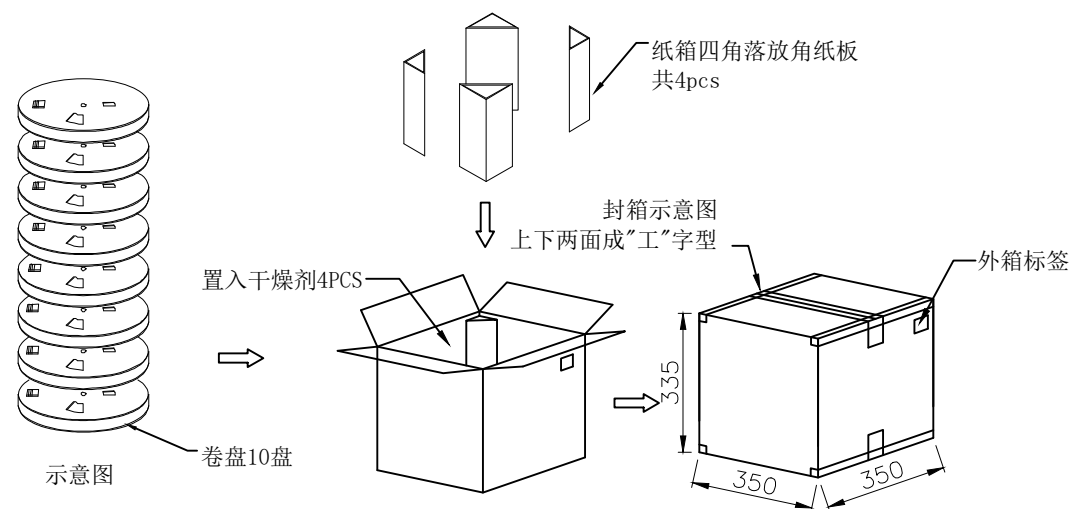
REV	DESCRIPTION	DATE	APPROVED
A	新版发行	2023.05.05	HHM



包装信息	
每盘产品数	800pcs
每箱卷盘数	10卷
每箱产品数	8000pcs
产品单重	依实际填写
每箱净重	依实际填写
每箱毛重	依实际填写



- 备注:
1. 自动机包装前先剪掉2格后调整前段空出10格, 中间装800PCS产品, 尾端也需空出10格;
  2. 按照图示方向将成品一一放入REEL包装盘内, 依同一方向放入;
  3. 一个REEL包装盘放置800个成品, 装满成品的REEL盘外圈需装上保护带, 四周贴上美纹胶, 盘面贴一张内标签;
  4. 将每盘产品依次放入箱内, 一箱装10盘 (800\*10=8000PCS). 四周用三角板固定, 最后用透明胶纸将纸箱四周封实, 箱外贴上外标签;
  5. 若有未装满之零数箱, 必须以缓行材料塞满, 数量比较少时可单盘包装出货;



CUSTOMER DRAWING			铭创科技 (东莞) 有限公司		
UNITS mm	SCALE 1:1	SHEET 2 OF 2	Mingchuang Technology (Dongguan) Co., Ltd		
PROJECTION: 		DRAW: DAP	TITLE TYPE C母座24PIN 板上四脚插板SMT+SMT L=12.4 双外壳 三模 有柱 无弹		
GENERAL TOLERANCE .000 ±0.02 .00 ±0.10 .0 ±0.20 .0 ±2° .00 ±1°		CHECK: HWT	MAT'L SEE TABLE	FINISH SEE TABLE	
		APPD: HHM	DWG. NO. B102401A	PART NO. _____	SIZE A4