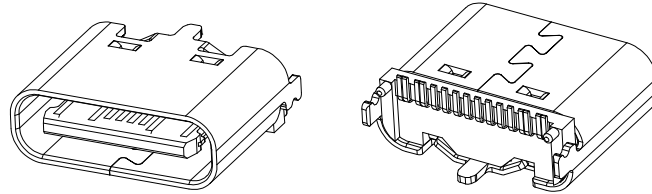
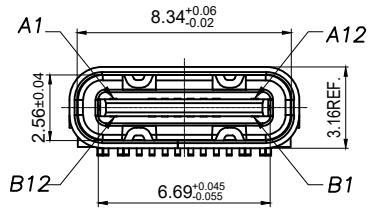


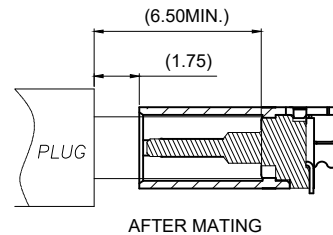
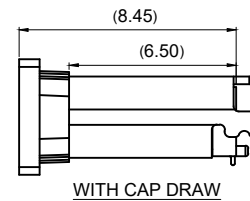
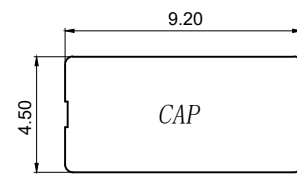
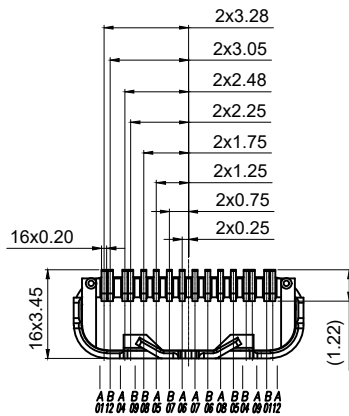
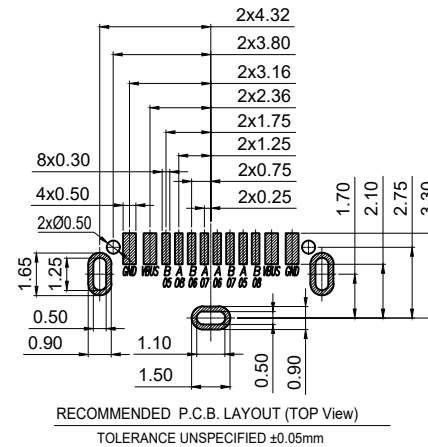
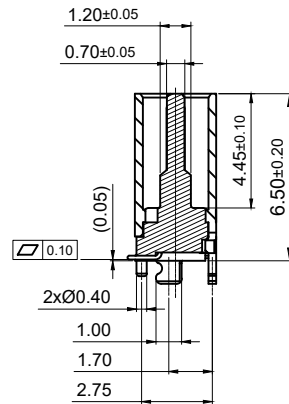
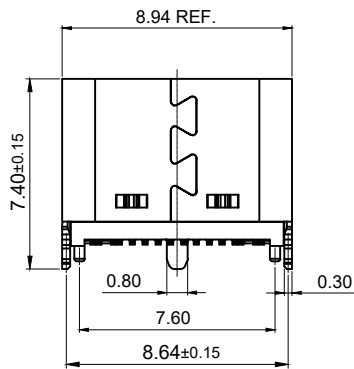


REV	DESCRIPTION	DATE	APPROVED



SPECIFICATION:

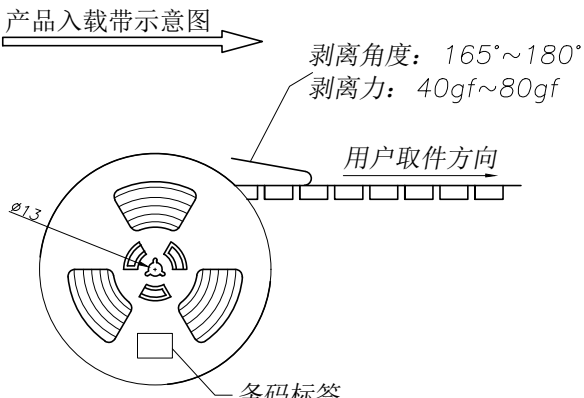
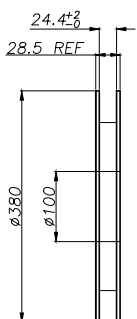
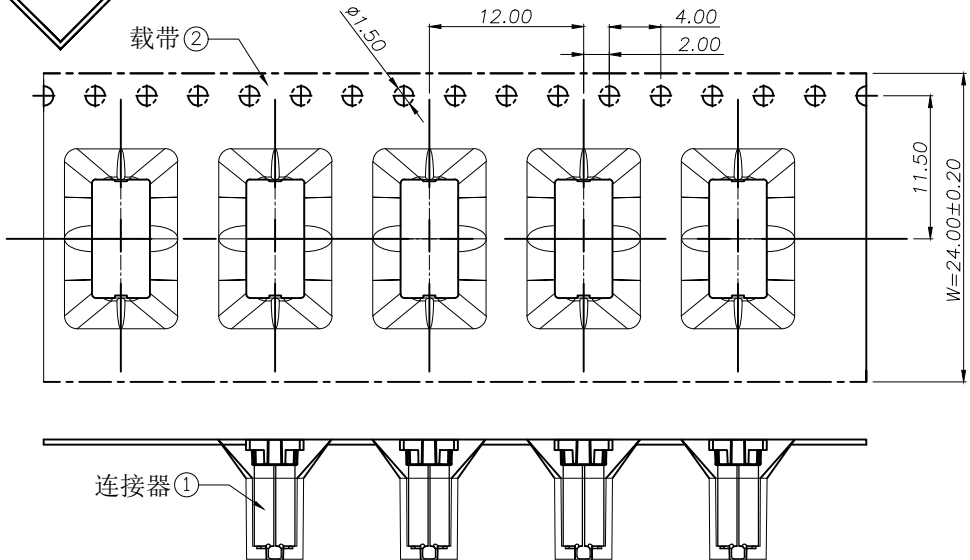
- ELECTRICAL:**
 - CURRENT RATING: 5A;
 - CONTACT RESISTANCE: 40mΩ Max;
 - DIELECTRIC WITHSTANDING VOLTAGE: 100V AC;
 - INSULATION RESISTANCE: 100 MΩ MIN;
- MECHANICAL:**
 - MATING FORCE: 5~20N;
 - UNMATING FORCE: 8~20N;
 - DURABILITY: 10000 CYCLES; 6~20N AFTER DURABILITY TEST;
- MATERIAL:**
 - HOUSING & MOLDING: LCP BLACK UL94V-0;
 - TERMINAL: C7025 T=0.15mm;
 - SHELL: SUS304 T=0.30mm;
 - MID PLATE: SUS304 T=0.15mm;
- PLATING SPECIFICATION:**
 - TERMINAL: CONTACT POINT GOLD PLATED 3μ "MIN PIN WELDING AREA PLATED Tin 80μ" MIN. NI 40μ" Min. UNDER PLATED OVER ALL.
 - SHELL: PLATED Ni 50μ" MIN (Salt spray 48H)
- ELECTROPLATED PRODUCTS NEED TO UNDERGO TIN ADHESION TESTING: THE TIN ADHESION AREA SHOULD REACH OVER 95%.**
- SMT REFLOW SOLDERING (PEAK VALUE 260 °C ± 5 ° C) SHALL BE FREE OF BLISTERING, GLUE MELTING AND POOR COLOR CHANGE (DEFORMATION WITHIN TOLERANCE)**
- OPERATING TEMPERATURE: -40°C ~ +85°C**



A1	GND	B12	GND
A4	VBUS	B9	VBUS
A5	CC1	B8	SBU2
A6	D+	B7	D-
A7	D-	B6	D+
A8	SBU1	B5	CC2
A9	VBUS	B4	VBUS
A12	GND	B1	GND
PIN	SIGNAL NAME	PIN	SIGNAL NAME

CUSTOMER DRAWING		
UNITS mm	SCALE 1:1	SHEET 1 OF 2
PROJECTION: 	DRAW: DAP	
GENERAL TOLERANCE X. ±0.25 X.x ±0.20 X.xx ±0.15 X.xxx ±0.10 ANGLES ±2°	CHECK: HWT	MAT'L SEE TABLE FINISH SEE TABLE
	APPD: HHM	

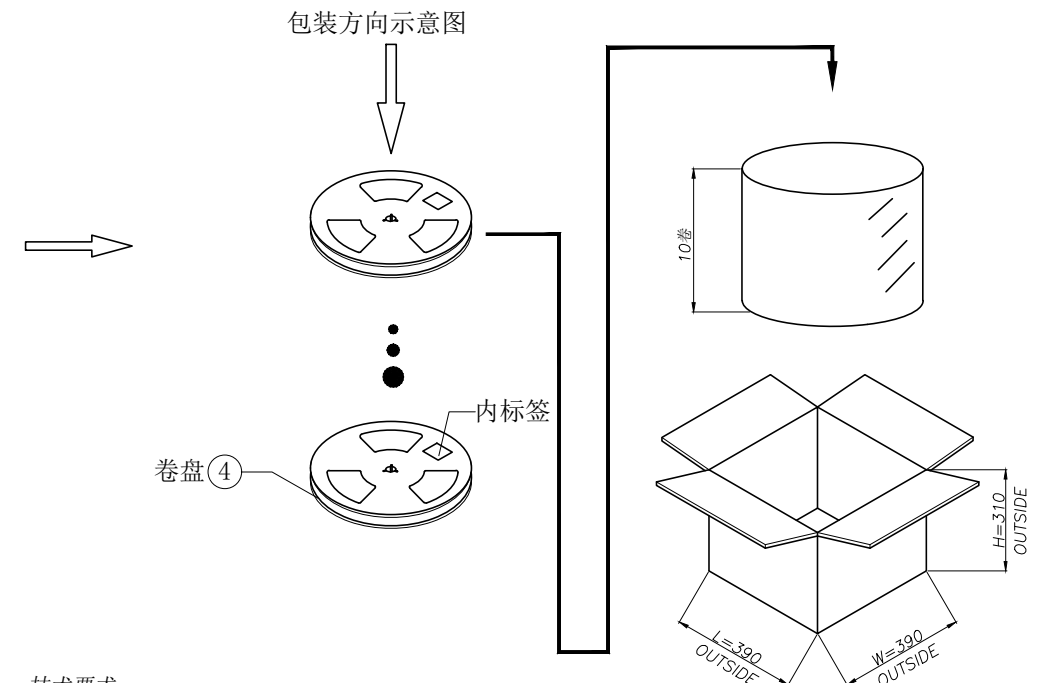
铭创科技 (东莞) 有限公司 Mingchuang Technology (Dongguan) Co., Ltd	
TITLE TYPE C 母座 16PIN 立式三脚插板 SMT L=6.5 C 款	
DWG. NO.	PART NO.
A031632A	_____ SIZE A4



卷盘示意图

05	纸箱	B-05-0012	390mm*390mm*310mm	1 PCS
04	卷盘	/	D=380mm, d=100mm, H=28.5mm	10 PCS
03	上带	/	W=20.7mm, T=0.05mm	9600 mm
02	载带	B-03-0023	W=24mm, T=0.50mm, P=12.0mm	9600 mm
01	连接器	A031632A	16PIN, SMT	8000 PCS
序号	物料名称	物料编号	规格	描述

REV	DESCRIPTION	DATE	APPROVED



技术要求:

- 载带首尾各留出 10PCS 空格 不装产品;
- 每穴放置 1PCS 产品, 每卷装 800PCS 产品, 放置方式如图所示;
- 将包装好的产品; 每盘必需贴上内标签; 将贴好内标签的产品每 10 盘堆叠.
- 在纸箱四角垫上 4 个三角垫, 然后把装好产品的卷盘放入纸箱中, 最后用胶带封箱; (如客户有要求, 请按客户要求包装出货)
- 上带与载带的剥离力: 40gf~120gf, 跳动量在 30gf 内; (剥离角度: 165°~180°, 剥离速度: 250~300mm/min)
- 产品符合 RoHS 环保标准要求.

CUSTOMER DRAWING			铭创科技 (东莞) 有限公司 Mingchuang Technology (Dongguan) Co., Ltd		
UNITS mm	SCALE 1:1	SHEET 1 OF 2	TITLE TYPE C 母座 16PIN 立式三脚插板 SMT L=6.5 C 款		
PROJECTION: 	DRAW: DAP		MAT'L SEE TABLE	FINISH SEE TABLE	
GENERAL TOLERANCE X. ±0.25 X.x ±0.20 X.xx ±0.15 X.xxx ±0.10 ANGLES ±2°	CHECK: HWT		DWG. NO. A031632A	PART NO. _____	SIZE A4